



Manufactured for Europe and Switzerland Only

Ales Included

www.flogen-swiss.com



WHAT IS INCLUDED



KITCHEN

Kitchen base units, wall cabinets and work surfaces are fully fitted ready to accept standard sized white goods and electrical equipment. A double bowl inset sink with chrome mixer taps is included.

FLOOR FINISHES

Natural stone (beige travertin, opus pattern) floor tiles are supplied for ground floors throughout the home.

INTERNAL WALL DECORATION

Internal walls are lined in a double skin of plasterboard on both sides for exceptional soundproofing. Walls are finished in acrylic based paint in various colour combinations.

ELECTRICAL AND LIGHTING

Industry standard electrical installation includes power points, lighting switches, lighting points for interior and exterior lights. Outlets for heating/cooling, hot water and cooker are included.

WINDOWS AND DOORS

Sliding glass doors and chassis windows are double glazed (4+16+4mm) insulated PVC or aluminium with integral handles and locks. Internal doors are post formed timber texture with aluminium handles. Entrance doors are steel framed security blinded doors with three point locking devices.

WARDROBES

Fitted wardrobes and cupboards have sliding or concertina white post formed doors.

SANITARY WARE

Premium quality vitrified sanitary ware with chrome taps is supplied as standard per house plans.

OPTIONS

Multiple options are available over and above our standard home supply specification and are subject to additional cost.

Note. This summary applies only to Bauhu standard homes and is intended as a guideline only. Bauhu Homes reserves the right to alter or substitute materials and components without notice.

ENGINEERED FOR LIVING

Bauhu homes incorporate the very latest technology at every level from a precision engineered light steel structural frame to cutting edge energy saving techniques and premium quality fixtures and fittings.

The result is an elegant, energy efficient, intelligent home that requires minimum maintenance and provides the owner with complete control over the immediate environment.

Light steel frame construction systems provide reliability, rapidity, functionality and high levels of technical performance.





DESIGNED AND BUILT IN EUROPE

Bauhu homes are engineered to respond to diverse climatic conditions so your home will retain the highest levels of comfort whilst making the best of the local climate.

Bauhu steel frame system ensures a stable structure which will not move or rot in humid conditions, is not effected by termites and is proven to be the most resilient construction method for seismic or cyclonic regions.

A mechanical ventilated cladding system and insulated windows provide the highest insulation values possible helping to maintain a controlled environment.



ENVIRONMENTAL IMPACT

Bauhu Homes are designed to preserve the environment by providing exceptional thermal insulation performance minimising running costs and reducing power consumption. Low energy LED lighting, solar options and bioclimatic design can all be incorporated into Bauhu buildings as options.

Bauhu homes are manufactured entirely from 100% recyclable materials.

WALLS THAT BREATHE

Ventilated mechanical cladding systems used in our homes ensure a healthy indoor climate in which to live and work.

By creating a two leaf construction for the external wall, the ventilated air space between the two leaves serves to maintain a comfortable indoor climate.

The load bearing structure of a building with an exterior insulation layer is simply protected from weather influences by secondary cladding boards. A ventilated cavity between the facade cladding and the insulation layer prevents rainwater from penetrating and diffuses water vapour from the inside to the outside.

STATE OF THE ART TECHNOLOGY

The use of large areas of glass, providing maximum transparency and light penetration in Bauhu homes ensure that rooms are flooded with light and help to define the character of a building. At the same time they are also a constant interface between the inside and outside – a decisive factor in the energy balance of buildings.

With its new generation of windows, Bauhu homes meet the highest requirements in terms of energy efficiency with the best thermal insulation and integrated ventilation.

Sliding doors operate almost silently in corrosion-free stainless steel tracks. All sliding units run in a single plane, with no unsightly door leaf protruding into the room.

ENERGY RATING

The building envelope is designed to respond to or surpass current energy efficiency regulations.



DESIGN AND PLANNING

Choose from our range of home designs or commission a custom designed house. We can modify standard designs to respond to personal tastes or specific project requirements. Our architects provide full detailed drawings to work from or to assist in obtaining building permits.

FACTORY MANUFACTURE

Building frame structures are manufactured and pre assembled at factory level to ensure an engineered finished product and an accurate component supply.

All parts of the building envelope and interior decoration items are assembled together to provide a complete building package ready for assembly on site.

EXCLUSIVE HOME DESIGNS

Bauhu homes offer a considered selection of modular and traditional house designs.

Our light steel frame buildings offer an extremely cost effective, fast and flexible building system with attractive designs to blend into local environments and suit most budgets.

Our design team can customise existing designs or create a unique new designs based on specific customer requirements.

All of our projects can be finished to reflect your own personal taste and style.



www.bauhu.com

DELIVERY

Our modular buildings can be shipped anywhere in the world in standard sized shipping containers or by road. The building is packaged at the factory and loaded into suitable transport for delivery direct to the work site.

ASSEMBLY

The building arrives on site with all of the components required for the complete installation of the house. Our team can install the building or the house can be assembled by local contractors with the help of full installation drawings which are supplied under our supervision.





SANITARY WARE

Premium quality white vitrified sanitary ware with chrome taps is supplied as standard, please refer to individual house plans for bathroom equipment layout.

HOT WATER

Homes benefit from individual hot water production using immersion heating in wall mounted hot water tanks which can be managed by a timer if required.

HEATING, AIR CONDITIONING AND VENTILATION

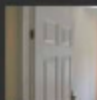
Mechanical equipment can be supplied with Bauhu homes but is dependent on project location and subject to individual quotation.

ENERGY SAVING BIOCLIMATIC DESIGN

Although each of our homes can be custom designed to suit individual tastes and space requirements all Bauhu homes share a unique design style and basic philosophy.

Clean, unhindered spaces with large expanses of glass provide a calming experience and maximise natural light well known to make us feel good.

Open plan spaces also serve to regulate humidity naturally without resorting to mechanical ventilation adding a high comfort level.



www.bauhu.com

WINDOWS AND DOORS

Sliding glass doors and chassis windows are double glazed (4+16+4mm) heat insulated sealed PVC or Aluminium units with integral handles and locks.

Internal doors are post formed timber texture in a wide choice of styles and colours with brushed aluminium handles.

SECURITY

Entrance doors are steel framed security blinded doors with three point locking devices.

Security glass can be fitted in all windows as an additional option.



FITTED KITCHENS

We think you'll be completely inspired by our expertly crafted kitchens. From time-honoured traditional designs to more adventurous looks, your beautiful new kitchen will be an exciting experience.

Bauhu kitchens are manufactured from premium quality materials with concealed sprung hinges and brushed aluminium handles.

Worktops are finished with a bullnosed edge and concealed joints making food preparation and cleaning a pleasure.

Our kitchen designs allow for the addition of a hob and oven, a concealed dish washer, fridge, microwave and an extractor hood or other appliances.

OUTSTANDING KITCHEN DESIGN

Bringing happiness into people's lives by improving their quality of life is both our mission and the main source of our inspiration.

The source of our unique design approach is derived from the understanding of the habits and needs of today's kitchen user's life style.

We use the latest technology to manufacture not only aesthetically pleasant, but also structurally durable kitchens that surely will make a difference in your lives.



www.bauhu.com

KITCHEN PACKAGE

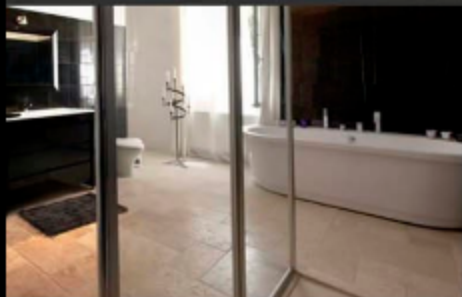
Our kitchen package includes base and wall units, fully fitted, together with a striking laminated worktop. Base units are fully equipped with a wealth of labour saving ergonomic features, drawers, and a sealed skirting profile.

We also provide the sink unit with premium quality mixer taps.

Your home will have a ready to use, quality kitchen with all the latest gadgets but please note that white goods and cooker equipment are only available by special request and will be subject to additional cost.

Custom designed kitchens are also possible.





DESIGNED TO MAKE YOU FEEL GOOD

Attention to detail is what makes a house great. Large or small, it is the little details that count.

Bauhu homes pay attention to the choice of paint colours, the ergonomic layout of the home, the quality of fixtures and fittings and tiny things like door handles and hinges.

Wherever possible we make responsible decisions to select natural products like our real stone floor covering so that the overall picture is one of elegance and comfort.



NATURAL STONE FLOORING

Light, warm, easy to maintain natural stone floor tiles are fitted throughout the home. Other finishes are available.

ELEGANT FITTED WARDROBES

Fitted wardrobes and cupboards have sliding or concertina post formed doors to match interior doors.

CAREFULLY SELECTED WALL COLOURS

Internal walls are lined in a double skin of plasterboard on both sides for exceptional soundproofing. Walls are finished in acrylic based paint in various colour combinations chosen by our experienced design team.



www.bauhu.com

CUSTOMER OPTIONS

Depending on when you decide to buy your home and the design chosen certain options are available to customers.

Our interior design team is at your service to help make individual choices and personalise your home with new colour schemes or special effects.

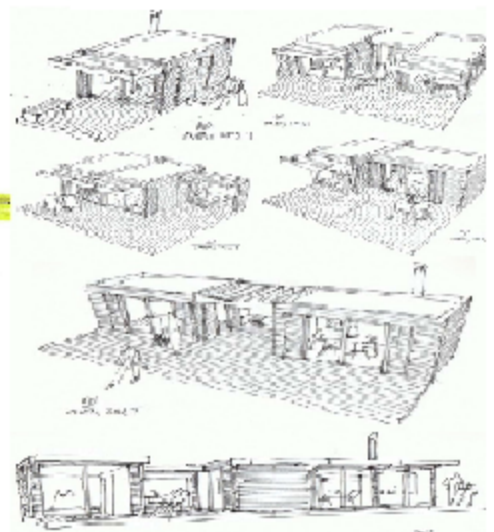
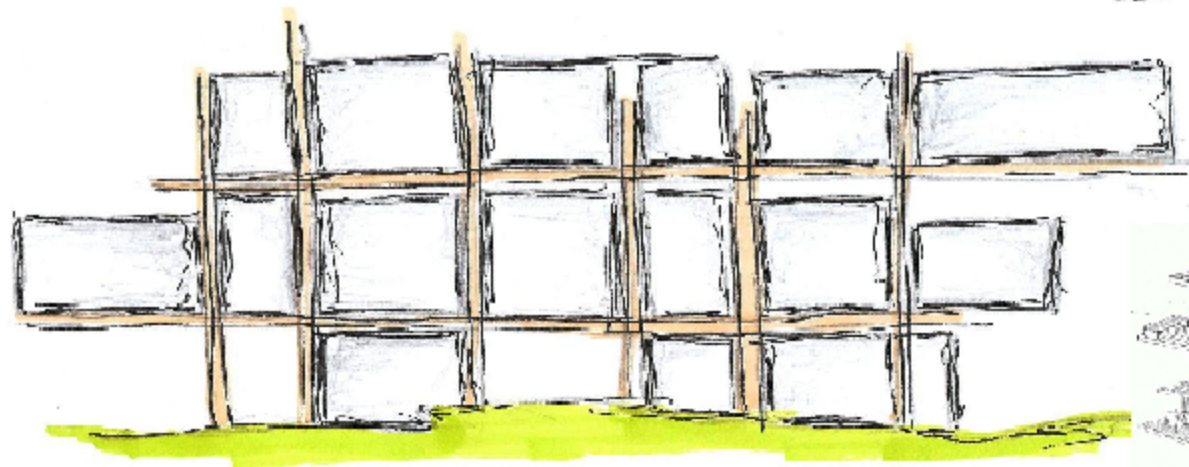
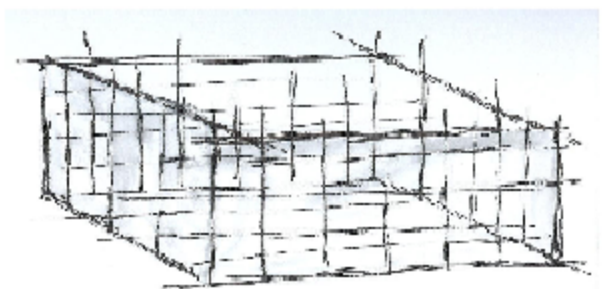
Your home can be designed just the way you want it.

Please note that custom finishes may incur additional costs and delay completion.



The Concept

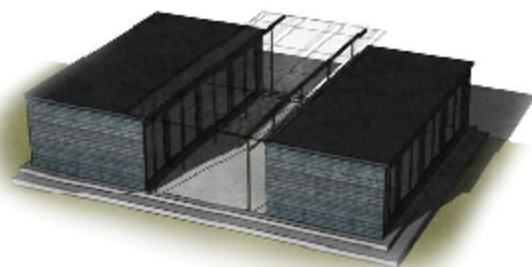
Defining the Modular System:



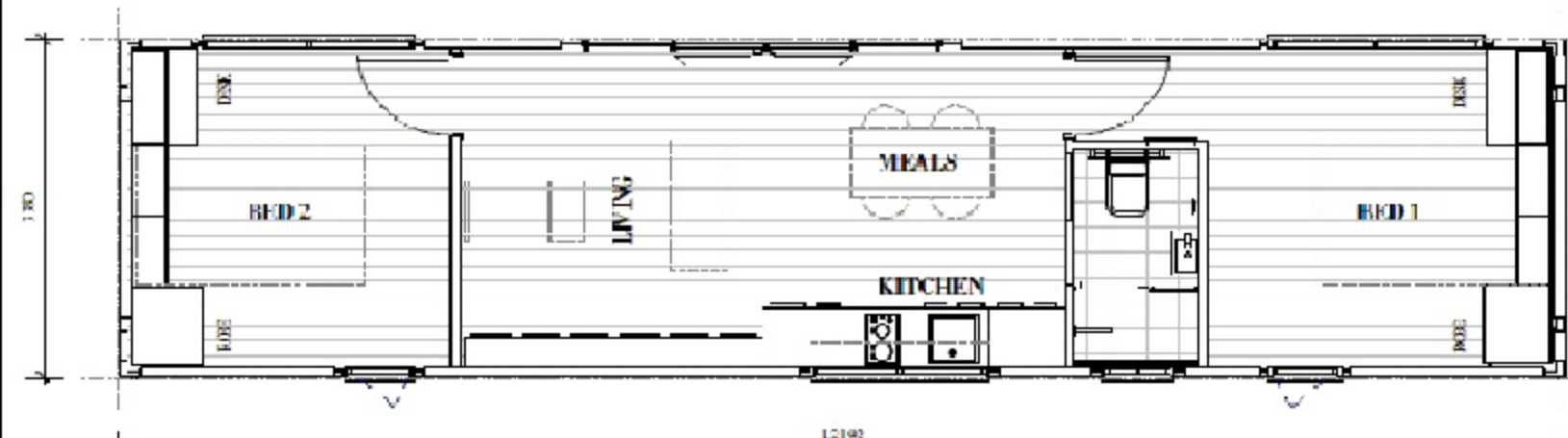


2x

1200 - 1600 SF







FLOREN module

UNIVERSIDAD POLITÉCNICA DE VALENCIA

El módulo de arquitectura se compone de un conjunto de módulos que se pueden combinar entre sí para formar un edificio de cualquier tamaño y configuración.

El módulo de arquitectura se compone de un conjunto de módulos que se pueden combinar entre sí para formar un edificio de cualquier tamaño y configuración.

El módulo de arquitectura se compone de un conjunto de módulos que se pueden combinar entre sí para formar un edificio de cualquier tamaño y configuración.

El módulo de arquitectura se compone de un conjunto de módulos que se pueden combinar entre sí para formar un edificio de cualquier tamaño y configuración.



FLOGEN module

SIMPLIFIED DESIGN • SIMPLIFIED CONSTRUCTION



1. Exterior Cladding
 2. Insulation
 3. Structural Elements
 4. Interior Cladding
 5. Floor Slab
 6. Foundation

FLOGEN MODULAR ECONOMIC HOUSE



F FLOGEN
module
 SIMPLIFIED DESIGN • SIMPLIFIED CONSTRUCTION



South-West Elevation
 Scale: 1:20



South-East Elevation
 Scale: 1:20



North-West Elevation
 Scale: 1:20



North-East Elevation
 Scale: 1:20



FLOGEN module

SIMPLIFIED DESIGN • SIMPLIFIED CONSTRUCTION



FLOGEN 2016

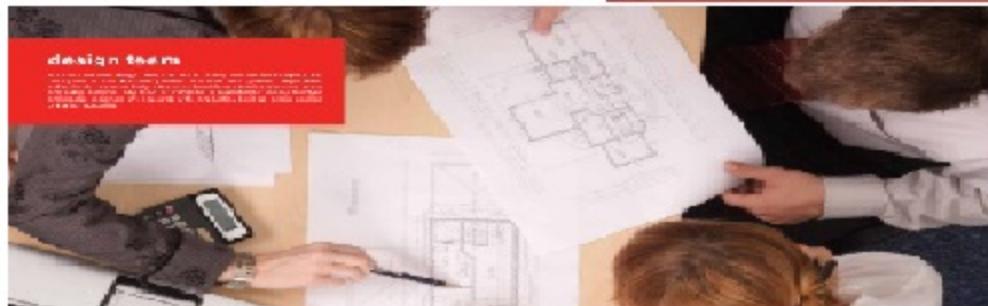


production line

The modules are produced in a controlled environment, ensuring high quality and consistency. The production line is fully automated, ensuring a high level of precision and efficiency.

design team

The design team consists of architects, engineers, and construction professionals who work together to create a sustainable and efficient building solution. The team focuses on optimizing the design for ease of construction and long-term durability.



transport and assembly

1

Site transport. The finished modules are designed to be easily transported. Protection against adverse weather conditions and mechanical damage is provided. Transport by truck, rail or sea is possible.

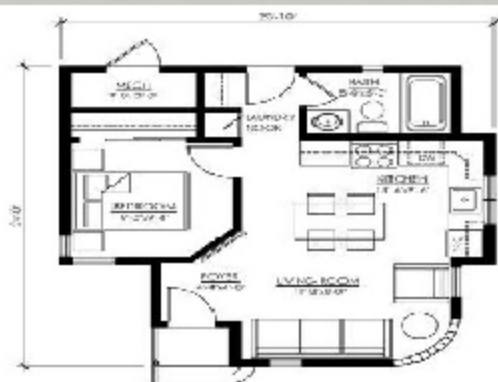
2

Easy unloading. After the delivery to the construction site, the modules can be set up directly at the previously prepared locations, without the need of storage.

3

Fast assembly. The installation of our products is rebuilding from blocks. All modules are completed together in one place, and then lowered. The system provides the possibility of disassembling and reassembling in another location.





MAIN FLOOR PLAN - 491 SQ. FT.
NUMBER - 491



MAIN FLOOR PLAN - 449 SQ. FT.
FORMERLY - 545



SECOND FLOOR PLAN - 244 SQ. FT.
FORMERLY - 244



LOW BUDGET HOUSES



HOME DESIGNS

Choose from Baihu Homes considered selection of standard home designs all of which can be modified to individual tastes or project specific requirements.



PALM 34
35m²/378ft²



PALM 42
42m²/452ft²



PALM 55
55m²/592ft²



PALM 68
68m²/732ft²



PALM 85
85m²/915ft²



PALM 100
100m²/1076ft²



ISLAND 85
85m²/915ft²



ISLAND 100
100m²/1076ft²



ISLAND 130
130m²/1399ft²



ISLAND 200
200m²/2153ft²



ISLAND 340
340m²/3660ft²



ZERO 130
130m²/1399ft²



ZERO 160
160m²/1722ft²



ZERO 200
200m²/2153ft²



ZERO 250
250m²/2691ft²

